

Part Detail

Please see the details of the part you have configured. Note that Carling reserves the right to change product details and specification without prior notice.

Catalog Number

V7D2GHNB-AAC00-000

Specifications

Part Number: V7D2GHNB-AAC00-000

CONTURA II & III ROCKER SWITCH SERIES

SINGLE POLE: ON-OFF-(ON)

RATING: 20A 12V

10 TERM BASE: .250" TABS; NO BARRIERS ON BASE; NO JUMPERS

SEALED- LAMP 1 IND; LAMP 2 LENS UP WHEN LIT: T8+ T7-/T3+ T7-

LAMP 1 - SUPERBRIGHT GREEN; 12VDC

LAMP 2 - AMBER; 12VDC

BLACK BRACKET; NO GASKET

CONTURA II, THICK END OF ACTUATOR OVER T1-T4

WHITE; BAR LENS AT THIN END & SQ. LENS AT THICK END OF ACT.

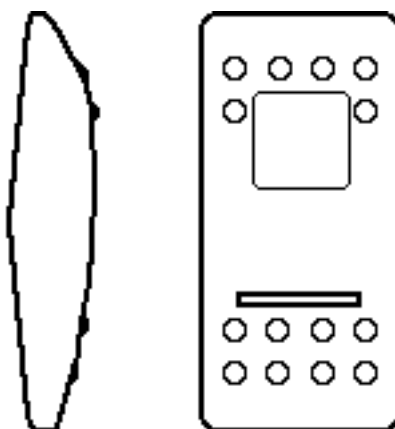
BLACK ACTUATOR - HARD FINISH

NO LEGEND AT FIRST LOCATION

NO LEGEND AT SECOND LOCATION

Additional Comments

Part Image for V7D2GHNB-AAC00-000



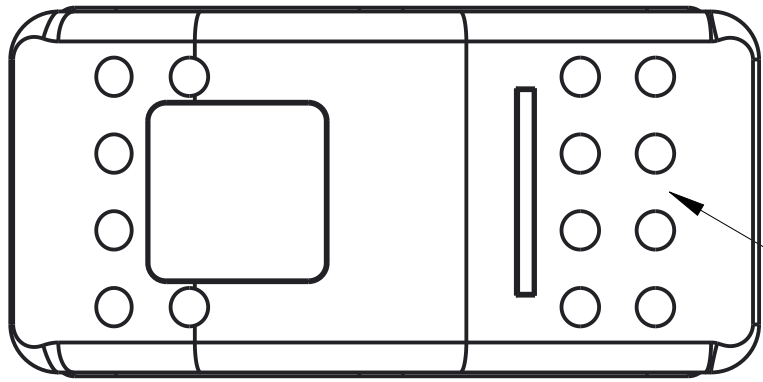
NOTE: NOT DRAWN TO SCALE. SOME LEGENDS MAY APPEAR DISPROPORTIONATELY SMALL

DRAWING FILE NO.		REV
V7D2GHNB-AAC00-000		03-05-21
REVISIONS		
DATE	DESCRIPTION	
03-05-21	DRAWING CREATED	



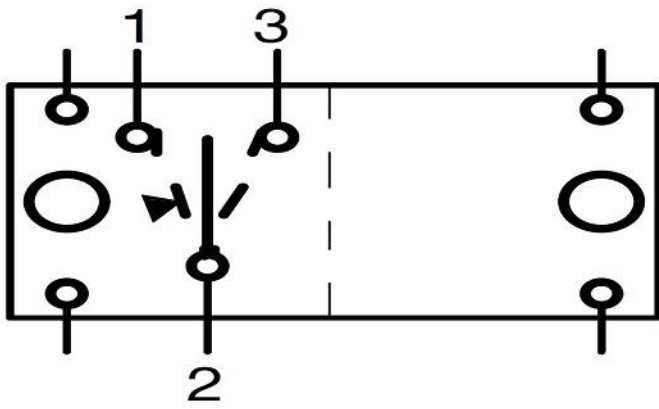
LEGEND MODEL

TOP END OF SWITCH

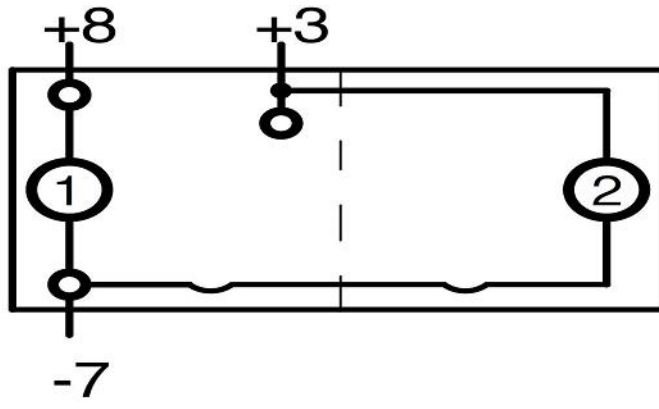


POS 1 POS 2 POS 3

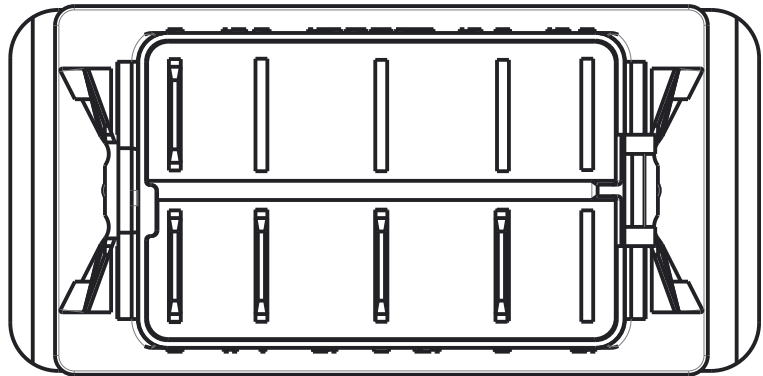
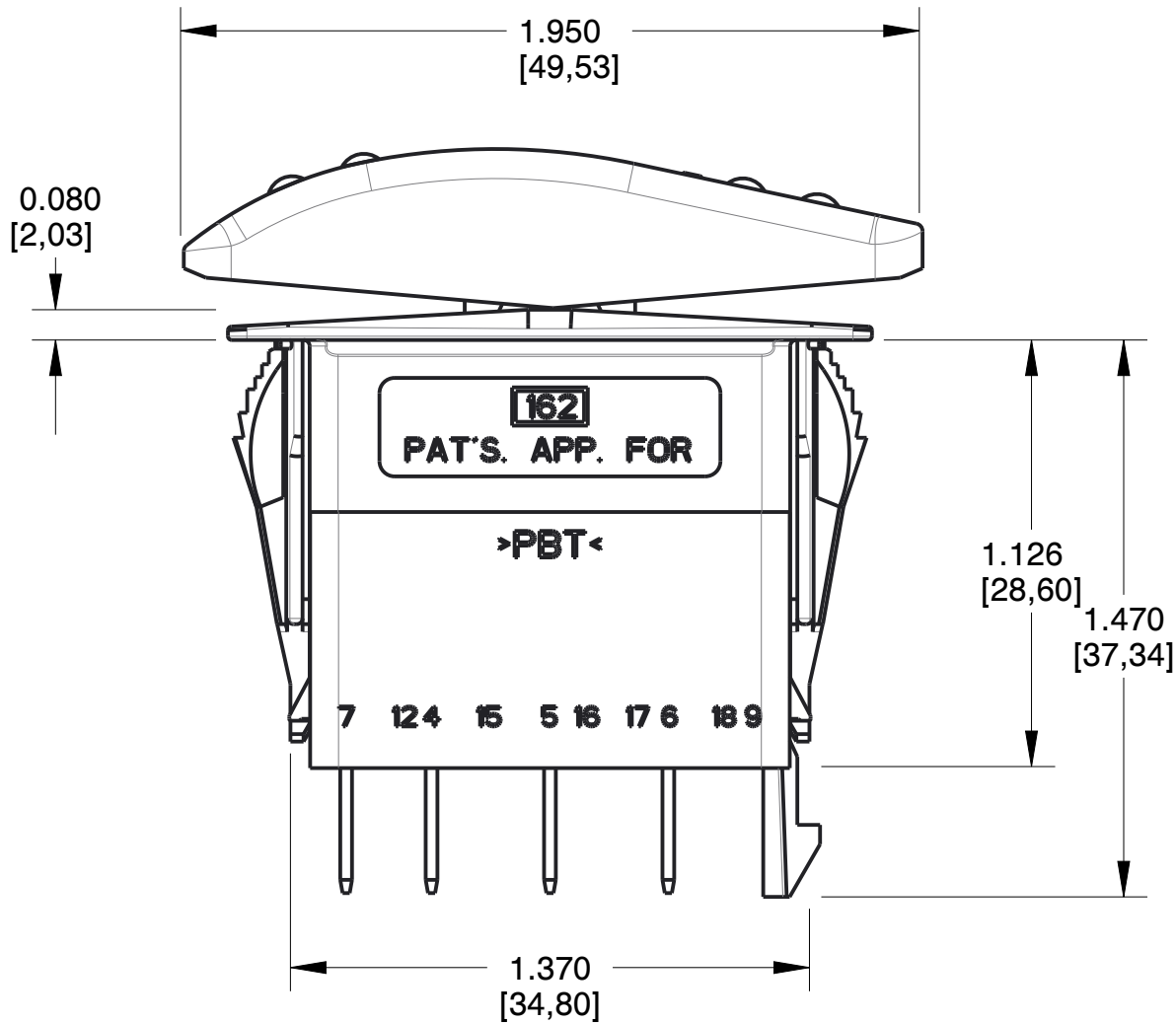
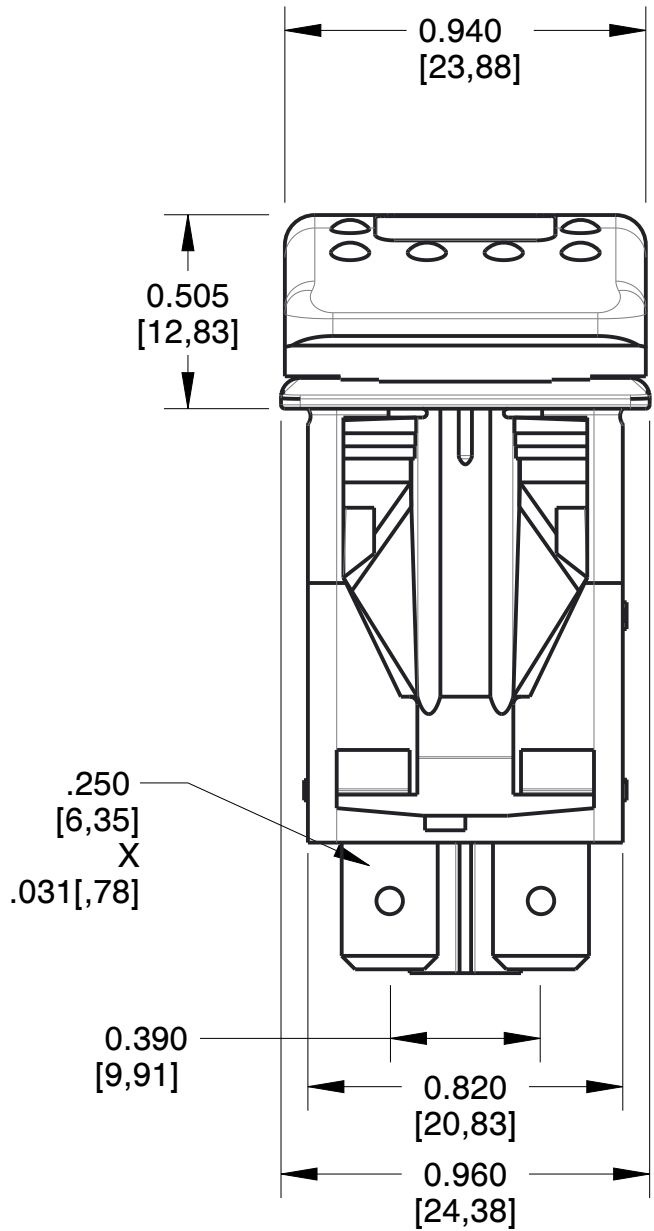
HARD SURFACE *



CIRCUIT DIAGRAM



LAMP CIRCUIT DIAGRAM



PROPRIETARY NOTICE
NOTICE TO ALL PERSONS RECEIVING THIS
DRAWING: THIS DOCUMENT IS THE PROPERTY OF
CARLING TECHNOLOGIES, INC. AND IS NOT TO BE
DISCLOSED, REPRODUCED IN WHOLE OR IN
PART OR USED FOR MANUFACTURING PURPOSES
BY ANYONE WITHOUT THE CONSENT OF
CARLING TECHNOLOGIES, INC.

DISCLAIMER

MANUFACTURER RESERVES THE RIGHT TO CHANGE
PRODUCT SPECIFICATIONS WITHOUT PRIOR NOTICE.

*Hard Surface:

Basic actuator structure molded
of thermoplastic polycarbonate
with a hard Nylon 66 thermoplastic
surface overlay.



60 JOHNSON AVE
PLAINVILLE, CT 06062, USA
PHONE: (860) 793-9281
SALES: SALES@CARLINGTECH.COM
APPLICATION SUPPORT: TEAM2@CARLINGTECH.COM

V-SERIES
SEALED ROCKER SWITCH

DO NOT SCALE DRAWING
UNLESS OTHERWISE SPECIFIED
DIMENSIONS: IN [MM]
TOLERANCES: $\pm .020$ [0.51]

DRAWING FILE NO.	SIZE
V7D2GHNB-AAC00-000	C
PRODUCT SERIES: V-Ser. Switch	SHEET 1 OF 1