



WORKLAMPS

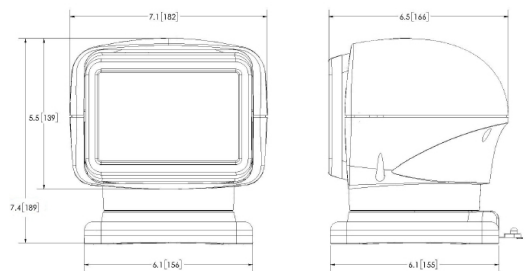


EW3010 Series Remote Spotlight LEDs

ECCO's EW3010 Series Remote Spotlights are multifunctional, motorised searchlights featuring a 12-24 VDC operation. Both spotlights can be installed wirelessly and are protected by a polycarbonate lens and the housings are available in black or white.

The EW3010/3011 offers full 360° continuous rotation, a 135-degree tilt range and features an optional hardwired in-dash joystick controller. The spotlight also has a home setting that automatically returns the light to its original position upon powering off the device. ASA resin housing makes the EW3010/3011 corrosion, UV and impact resistant and also feature patent pending reflective optics.

Dimensions



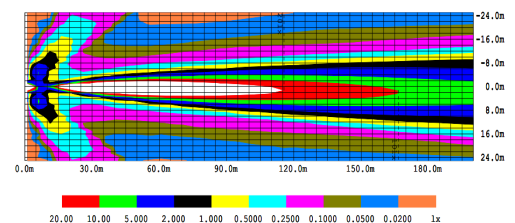
Models

PART NO.	VDC	AMPS	BEAM DISTANCE	CANDELAS	RAW LUMENS	TILT RANGE	COLOUR
EW3010	12-24	2.7	3,925 ft	350,000	2250	135°	Black
EW3011	12-24	2.7	3,925 ft	350,000	2250	135°	White

Features and Benefits

- Ten 5-watt LEDs
- Permanent or magnet mount available
- "Return to Home" setting will automatically return light to original position when powered off
- Aluminium heatsink lighthouse
- Polycarbonate housing

ISOLUX (10 LED)



Replacement Parts & Accessories

Description	Part No.
Replacement Remote	ER3010
Flood Diffuser (EW3010/11)	EZ3010F
Colored Lens (EW3010/11)	EZ3010X*
In-Dash Joystick Controller (EW3010/11)	EZ3011
5 Meter Joystick Cable (EZ3011)	EZ3012
Joystick Cable Extension (EZ3011)	EZ3013
Magnet Mount Kit, Black (EW3010)	EZ3016
Magnet Mount Kit, White (EW3011)	EZ3017