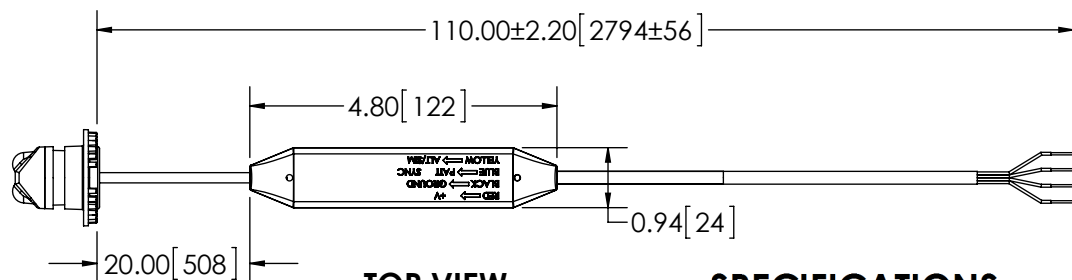


REVISION HISTORY		
REV.	DESCRIPTION	DATE
03	REVISED PER P11052	2012-11-19
04	REVISED PER P11052	2012-12-21
A	INITIAL RELEASE PER P11052	2014-11-10

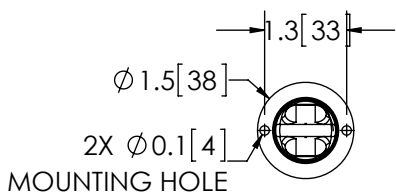


4- 22 AWG WIRES:
 BLK-NEGATIVE (-)
 RED-POSITIVE (+)
 YELLOW- ALT/SIM
 BLUE- PATTERN SELECT/SYNC

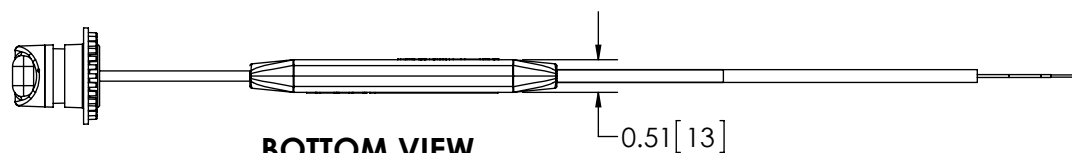
TOP VIEW

SPECIFICATIONS

- CERTIFICATIONS: **CE**; e; ECE R10;
 Note: Unique components, accessories, and hardware kits are not typically included in the Product Certification Test Protocols. Unless otherwise Specified, the Product Certifications referred to herein are predicated upon the base product model configuration.
- FLASH MODE: QUAD : 75 ± 5 FLASHES PER MINUTE
 DOUBLE : 75 ± 5 FLASHES PER MINUTE
 TRIPLE : 92 ± 5 FLASHES PER MINUTE
- VOLTAGE (NOMINAL): 12 VDC
- VOLTAGE (EXTREME): 9 to 16 VDC
- CURRENT (PEAK): 0.35A (@ 12 VDC NOMINAL)
- POWER (MAXIMUM): 4.5W (@ 12 VDC NOMINAL)
- TEMPERATURE RANGE: -22°F (-30°C) TO 122°F (50°C)
- CONNECTION: 9 Foot (2.74 Meters) 4 X 22 AWG Conductor
 Cable with Black Outer Jacket
- MOUNTING: 1 IN. THRU HOLE
- BASE MATERIAL: ZINC, NICKEL PLATED
- LENS MATERIAL: POLYCARBONATE, UV STABILIZED
- PRODUCT WEIGHT: 0.6 LBS (0.27 Kg)



FRONT VIEW



BOTTOM VIEW

FGS PRODUCT CHART				
FGS. NO.	COLOR	INPUT VOLTAGE (VDC)	PEAK CURRENT @ 12V	PEAK POWER
9011A	AMBER	12	0.35	4.5
9011B	BLUE	12-24	1	6.4
9011C	CLEAR	12-24	1	6.4
9011R	RED	12	0.35	4.5

NOTES:
 1. DIMENSIONS IN INCHES[MILLIMETERS (FOR REFERENCE)]

SCALE 1:3		APPROVALS	DATE
CAD GENERATED DRAWING DO NOT MANUALLY UPDATE. MODEL REFERENCED:A		DRAWN BY SNS	2012-12-21
		CHECKED BND	2012-12-26
TOLERANCES ARE IN INCHES, AND MILLIMETERS TOLERANCES ARE:		MECH. ENG. JLA	2012-12-21
		ELEC. ENG. TJT	2013-01-02
MILLIMETERS DECIMALS XX. ± 1.0mm XX.X ± 0.5mm		INCHES DECIMALS X.X ± 0.1 X.XX ± 0.04 X.XXX ± 0.02	ANGLES ± 0.5°
			FRACTIONS ± 1/64
THIRD ANGLE PROJECTION		TEST ENG. JRT	2013-01-02
		SALES. GLB	2013-01-02

ECCO® Electronic Controls Co.
 833 West Diamond Street, Boise, ID 83705
 800-635-5900
 www.eccolink.com

HIDE-A-LED, WIDE, 12 VDC		
CUSTOMER PART NO. SEE CHART	PRODUCT SERIES: 9000	
SIZE: A	DWG. NO. 9011X	REV. A
Electronically Controlled Use Latest Copy		SHEET 1 OF 1
Project: P11052	Date Created: 2012-09-04	

THIS DRAWING AND THE DESIGN IT DISCLOSES ARE THE PRIVATE PROPERTY OF ECCO AND IS ISSUED IN CONFIDENCE FOR ENGINEERING INFORMATION ONLY. THE DRAWING AND / OR DESIGN MAY NOT BE USED, COPIED, REPRODUCED, OR OTHERWISE DISCLOSED IN PART OR AS A WHOLE TO OUTSIDERS OR USED FOR ANY OTHER PURPOSE WITHOUT THE PRIOR WRITTEN CONSENT OF ECCO. THE DRAWING IS SUBJECT TO RECALL AT ANY TIME. YOUR POSSESSION OF THIS DOCUMENT CONSTITUTES ACCEPTANCE OF THESE TERMS. © 2012 ECCO