



Driving Global Safety

MDR-500 Series Dashboard 5.0 Local Mode

Cheat Sheet V.1

Jan 2018



Overview

This cheat sheet will help you download footage from the MDR. The aim of this document is to provide information on:

1. How to connect to your device.
2. View your recording(s).
3. Export clips in various formats.
4. Export data onto USB pen.

It does not cover all aspects of the Mobile Digital Recorder (MDR) or it's software options. For more detailed information please refer to the MDR Installation and Operations Guide.

Supports MDR-500 Series models:



4 Channel MDR



8 Channel MDR

Events: An activation of an input e.g. Sensor input (trigger 1-8), Over speed, Left indicator etc. These are displayed during playback.


Alarms: Is an EVENT that has been configured (in the MDR settings) to be an alarm. These can be displayed real-time (for 4G and Wi-Fi models only), in the Dashboard and Mobile App.

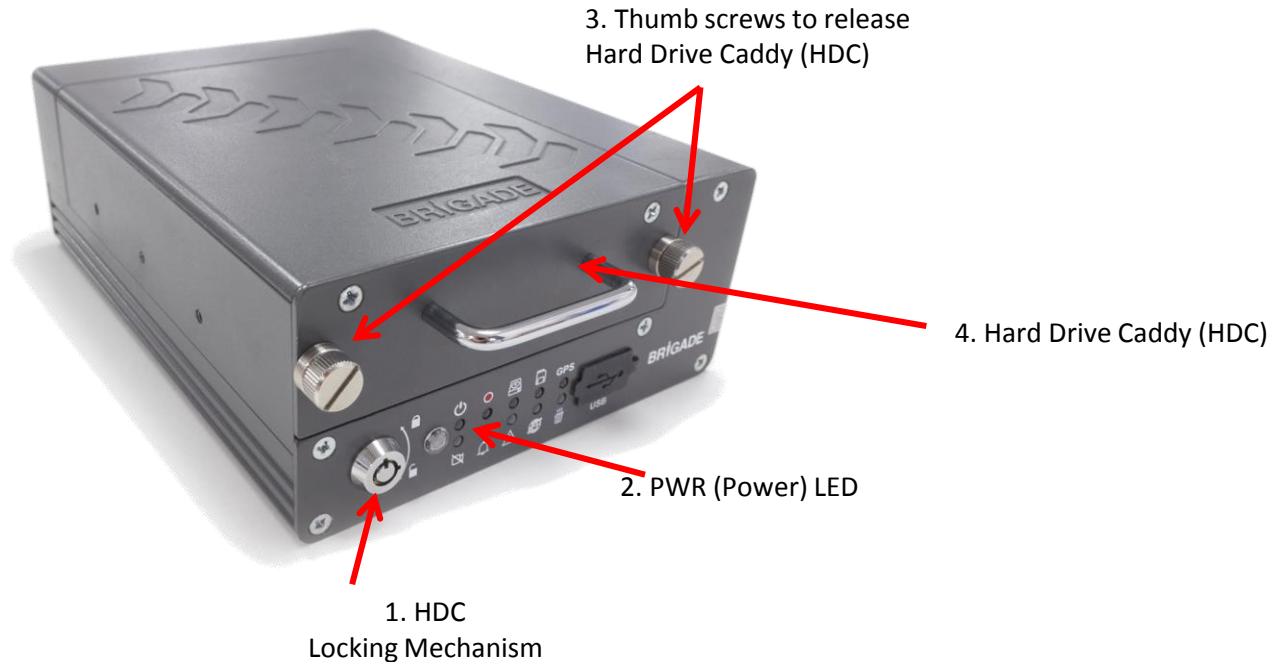
Metadata: Any data that is not video or audio i.e. GPS, Event, speed etc., info (black box data).

Clipping: A section of recorded footage you wish to save.

Local download: A download set to save to a directory on your PC.

Removing the Hard Drive Caddy (HDC)

1. Unlock the HDC using the key.
2. Confirm that the PWR LED  is OFF.
3. Unscrew the two thumb screws (anti-clockwise).
4. Gently pull the HDC by holding the handle.

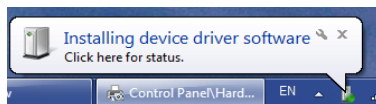


Connecting the HDC to the PC

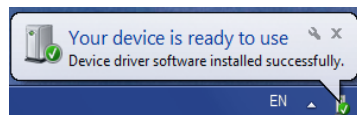
Users **must** follow the procedure listed below in order to correctly mount the HDC to their PC.

1. Connect the USB-B connector to the HD USB port.
2. Connect both USB-A, data and power connectors (see cable image) to USB ports on the PC. The pop up window should be displayed.

Hard Drive Caddy (HDC)

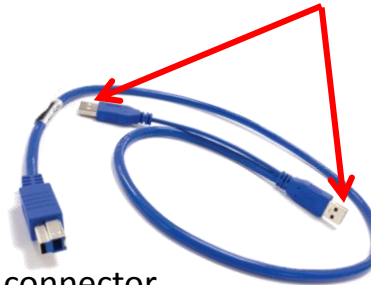


3. **Do not unplug** HDC until pop-up window states "Your device is ready to use" as shown below.



4. The two drivers have now been installed successfully.

USB-A connectors



USB-B connector

Warning: Premature removal of the HDC USB-A connector from the PC (during driver installation process) will cause this process to fail. This will cause the HDD to not appear in the MDR-Dashboard 5.0


MDR Dashboard to view/export files

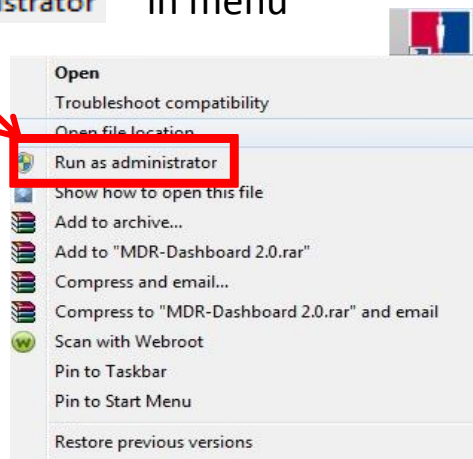
Viewing the data:

MDR Dashboard 5.0 Software **is backwards compatible with** MDR 400 Series.

Note: You must have the MDR Dashboard 5.0 Software installed on your PC. See Brigade website to download software.

Whilst your PC is connected to the HDC:

- Open the MDR Dashboard Software by right-clicking on the icon
- Select  **Run as administrator** in menu

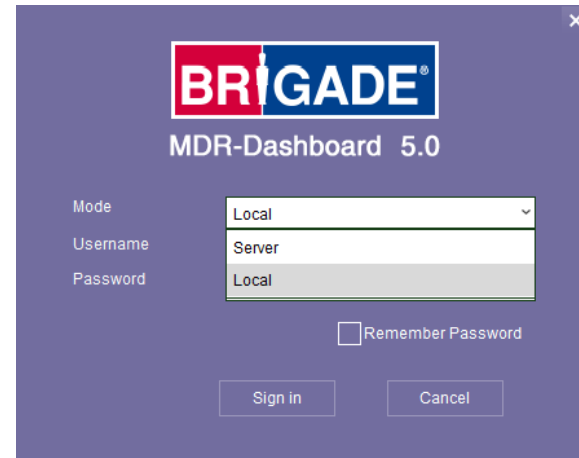


MDR Dashboard Local Mode

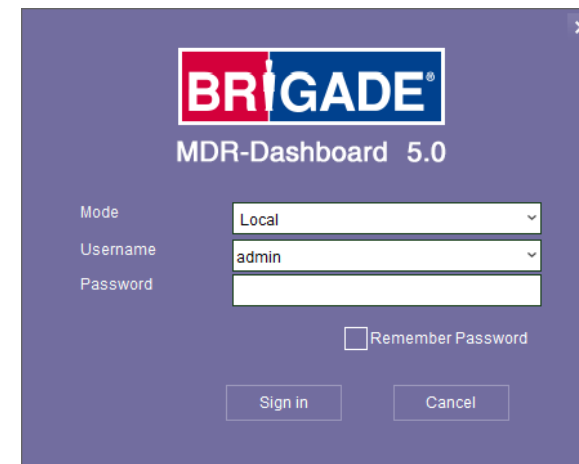


Login into MDR Dashboard 5.0

1. Change **Mode** to **Local** option from the dropdown menu.

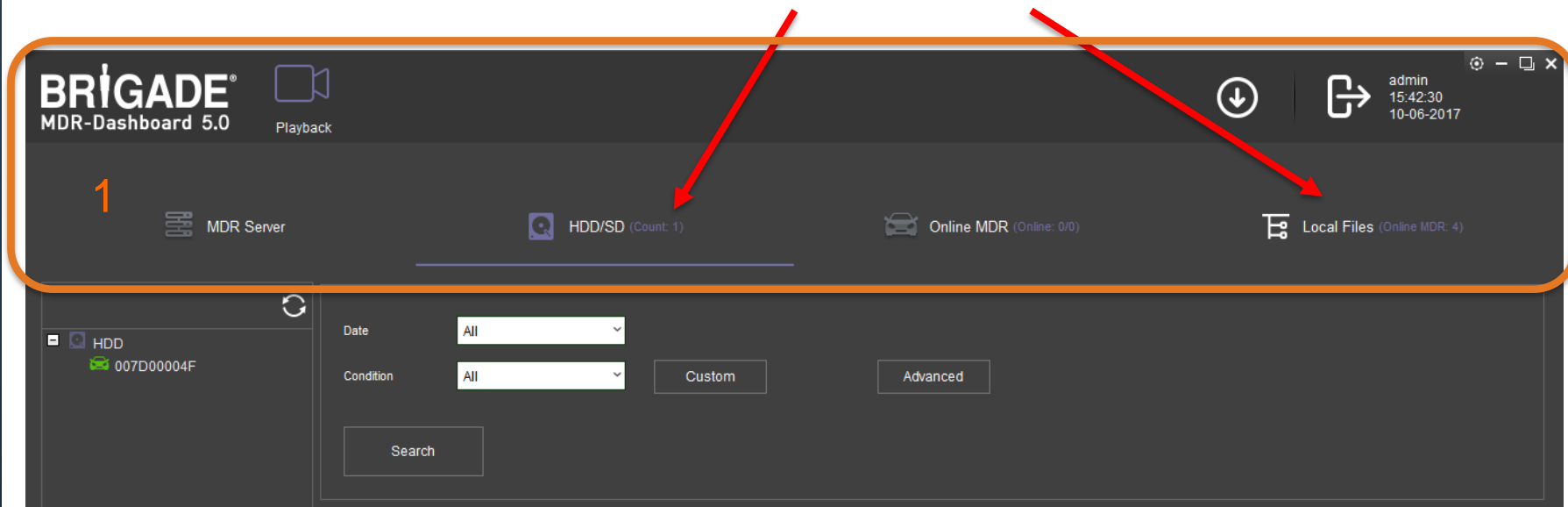
A screenshot of the MDR-Dashboard 5.0 login window. The window has a purple background and a close button (X) in the top right corner. At the top, the BRIGADE logo is displayed above the text "MDR-Dashboard 5.0". Below this, there are three labels: "Mode", "Username", and "Password". The "Mode" dropdown menu is open, showing "Local" as the selected option. The "Username" dropdown menu is also open, showing "Server" as the selected option. The "Password" dropdown menu is open, showing "Local" as the selected option. Below the dropdowns, there is a checkbox labeled "Remember Password" which is unchecked. At the bottom, there are two buttons: "Sign in" and "Cancel".

2. The default username: **admin** and “default password”: **LEAVE BLANK**
3. Once users have filled in username (must be lower case) click **OK**

A screenshot of the MDR-Dashboard 5.0 login window. The window has a purple background and a close button (X) in the top right corner. At the top, the BRIGADE logo is displayed above the text "MDR-Dashboard 5.0". Below this, there are three labels: "Mode", "Username", and "Password". The "Mode" dropdown menu is open, showing "Local" as the selected option. The "Username" dropdown menu is open, showing "admin" as the selected option. The "Password" dropdown menu is open, showing an empty field. Below the dropdowns, there is a checkbox labeled "Remember Password" which is unchecked. At the bottom, there are two buttons: "Sign in" and "Cancel".

Playback – HDD & Local Files

1. Data Source Area (area 1) shows the different playback options you can view or retrieve data from. In Local mode you have two playback options, **HDD/SD** and **Local Files**.

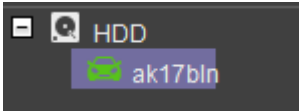


HDD - is active when the physical HDC (Hard Drive Caddy) is connected to your local PC.

Local Files - If you have saved local data on your PC you can access these files through the Local Files tab.

HDD Playback

- a. Once the HD has powered on, click the refresh icon , the vehicle will appear green to indicate it is available for browsing.
- b. The HDD/SD Count number shown  is the number of HDCs connected.

- c. Double-click the vehicle icon.  This will display ALL calendar events.

- d. Double-click on the relevant calendar date to display the pre-playback screen.

- Green dates are normal recordings
- Orange dates are alarm recordings
- Red dot represents metadata
- White outline is the current date (today's date)

- e. Ensure that **DOWNLOAD METADATA** is always ticked. 

This will ensure all metadata is shown with playback video.

2017 - 07						
S	M	T	W	T	F	S
						1
2	3	4	5	6	7	8
9	10	11	12	13	14	15
16	17	18	19	20	21	22
23	24	25	26	27	28	29
30	31					

HDD pre-playback screen



Click back arrow to return to calendar screen.

Select different view settings i.e. MAP, VIDEO & VIDEO/MAP

Download

Logout

Click play button to display the data.

Select number of channels to playback.

BRIGADE®
MDR-Dashboard 5.0
Playback

Playback > HDD/SD > 007D00004F(2017/7/17)

Map Video Video/Map Frame Information Event

Godstone Vineyards

Godstone Fire Station

Tyler's Ct
Lindley Rd
Oakley's Way
Flower Ln

Map data ©2017 Google 200 m Terms of Use Report a map error

Vehicle Status

Channels

Speed

G-Force

Channel 1

Channel 2

Channel 3

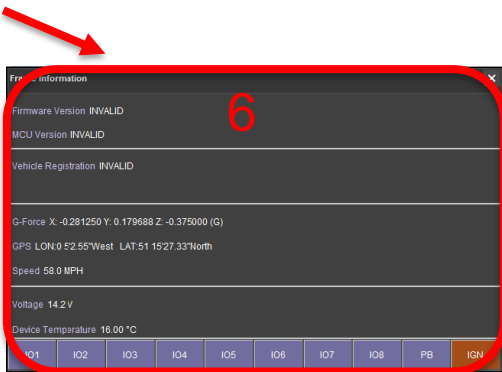
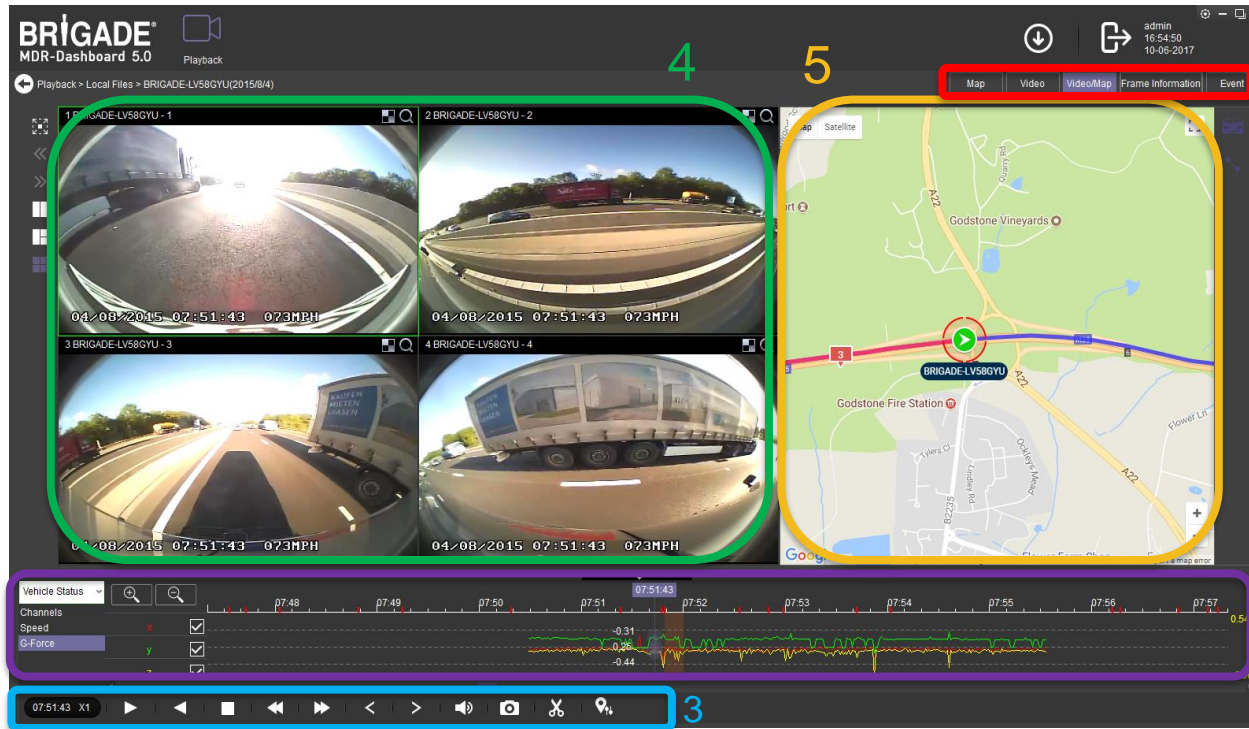
Channel 4

14:26:18 X1

MDR-Dashboard 5.0 Local mode interface

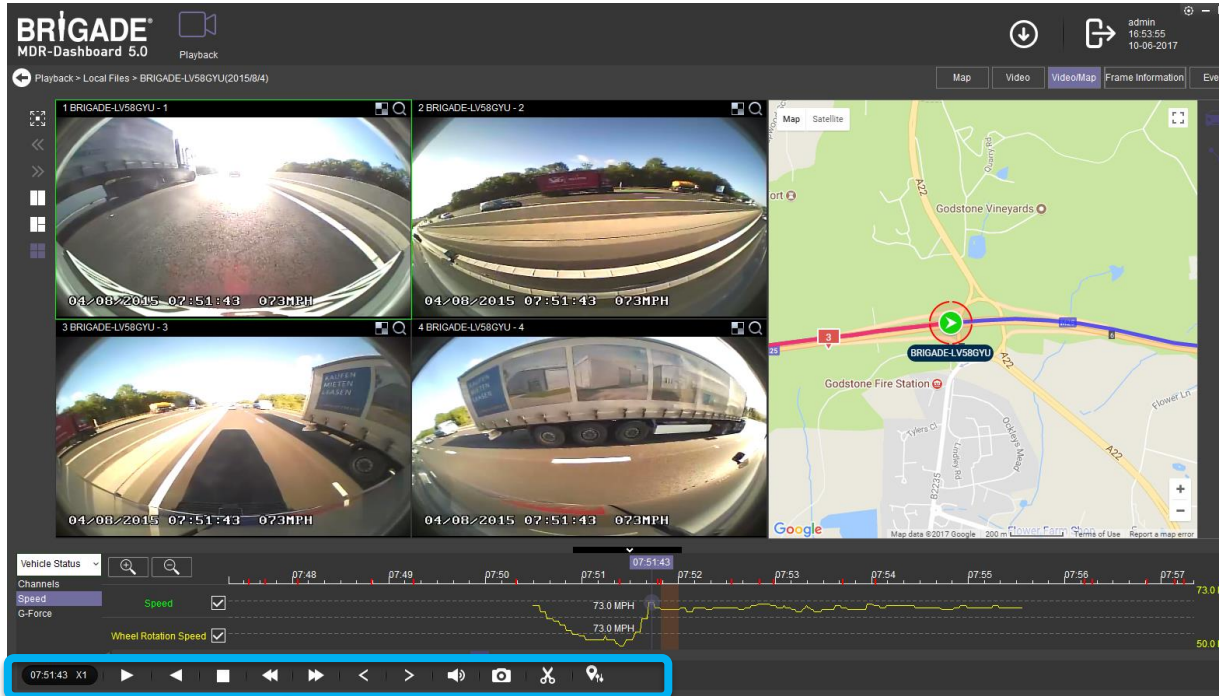
The key areas:

- 2. Graphics Panel (area 2)
- 3. Control Panel (area 3)
- 4. Media Playback (area 4)
- 5. Map, requires internet (area 5)
- 6. Frame Information (area 6)



2

Local mode – playback main screen



In Playback you can review the footage.

Control Panel

Fast Forward options (1x, 2x, 4x, 8x, 16x, 32x).

Maximum **Slow Forward** options are $\frac{1}{2}$, $\frac{1}{4}$, $\frac{1}{8}$, $\frac{1}{16}$ and $\frac{1}{32}$.

Control
Panel

Play/Pause

Stop

Fast Forward

Next Frame

Snapshot

GPS Filter



Current Playback position
& Playback speed

Rewind


Slow Forward

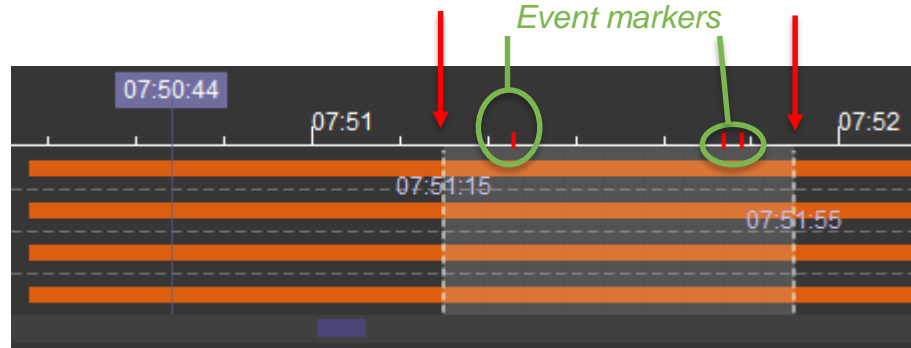
Previous Frame


Volume

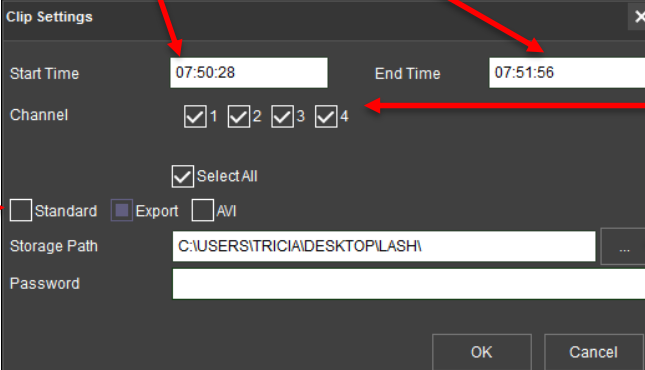
Clip

Exporting Videos

- Click on the **CLIP** button  on the control panel. Only accessible while video is being played or paused.
- White clip markers (broken vertical lines) appear as outlined below.
- Select the start and end time for the clip by dragging and dropping the clip markers to the desired time.



- Once satisfied click on the **OK** button.  The clip settings window (see below) will open.
- Double check start time and end time.



A 'Clip Settings' dialog box with a dark background. It has fields for 'Start Time' (07:50:28) and 'End Time' (07:51:56). Below these are checkboxes for 'Channel' 1, 2, 3, and 4, all of which are checked. There is also a 'Select All' checkbox. Below the channel checkboxes are three radio buttons: 'Standard' (unchecked), 'Export' (checked), and 'AVI' (unchecked). Below these is a 'Storage Path' field with the text 'C:\USERS\ITRICIA\DESKTOP\ILASHI' and a button with three dots. Below the storage path is a 'Password' field. At the bottom are 'OK' and 'Cancel' buttons.

Choose an option to download your file (see next slide).

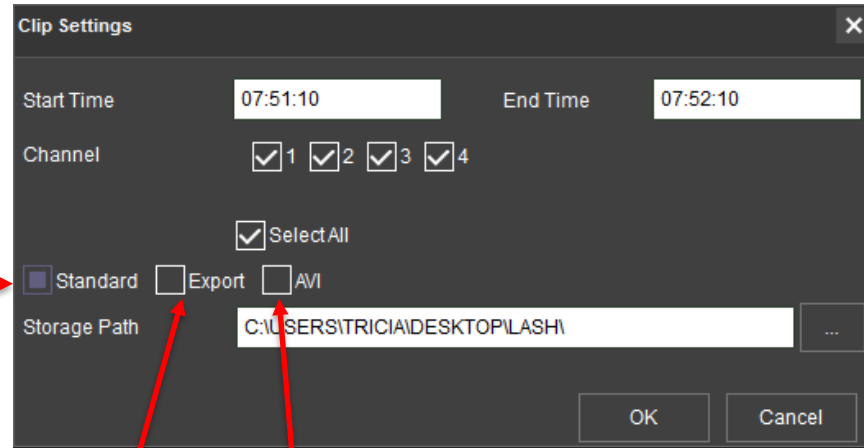
Check the number of channels you want to download. The more channels you choose the bigger the file size.

Choose the path where to save your file then click **OK**.

Three options to export videos

Option 1: Standard

We recommend when downloading using **Standard** for backing up and for sharing with other users with Dashboard software installed. As it clips and creates video files in proprietary format (H264). Captures raw images and the metadata.



Option 2: Export

Exports the footage to a self-run executable file. This means the footage can be played by a third party without the need for Dashboard software.

For security, a password can be added to the file (recommended but optional).

Note: The file should not be larger than 1.5GB

Option 3: AVI

.AVI files playable by common players such as Windows Media Player (WMP™) and Video Lan Client (VLC). Each channel is saved as a separate .AVI file so unable to view all channels simultaneously.

The advantage of this solution is the portability of the format. The disadvantage is the lack of protection and missing metadata information. Files can be played and edited by anyone.

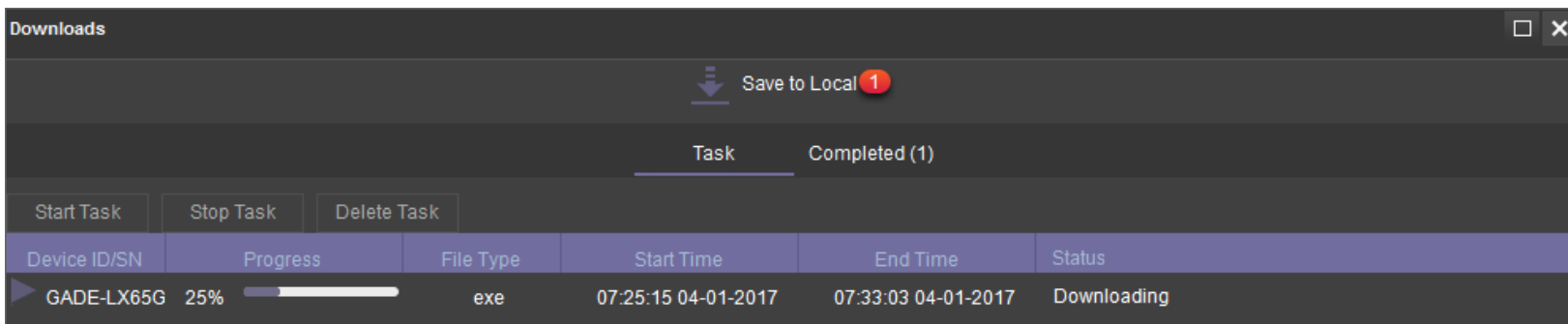
We do not recommend this option as it is not secure.

Dashboard 5.0 Save to Local Files

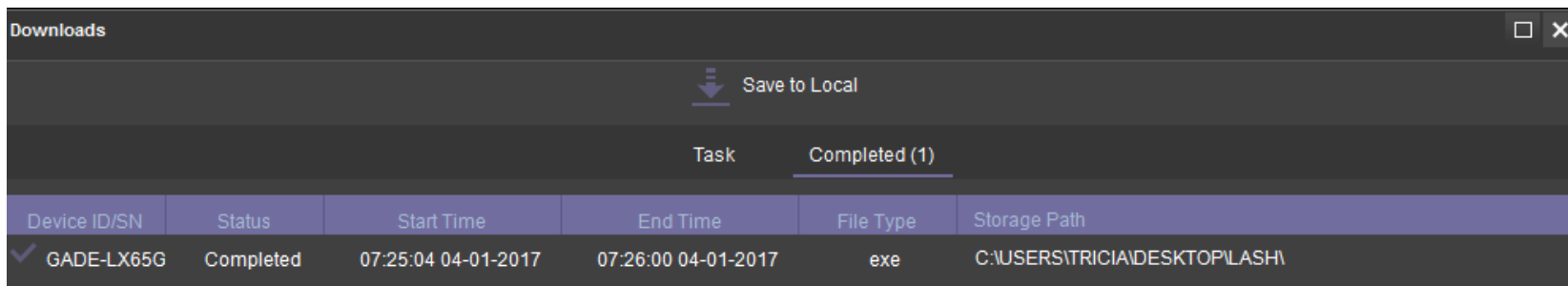
1. Click the  button to view active/historic downloads.



2. Task will download “Save to Local”. File will save to chosen directory under download to Local tab.



3. The Task will automatically move to the Completed tab.



4. Right-click a completed task and click “Open Folder”. This will automatically open the location you downloaded the data.

Playback – Local Files



Click back arrow



Playback > Local Files > BRIGADE-LX65GXC(2017/4/1)

to return to calendar screen.

To playback local downloads, go to **Local Files** tab. If local data has been saved with directory it will show the vehicle in the fleet list and the location on the PC of the file.

Double click a vehicle to open the calendar, this will show you all saved local footage for that vehicle.

Double click on the calendar the day you want to playback, this will then load the normal playback view.

Add a directory

To add a directory to local footage (saved as standard), click **Add**, navigate to the folder and click **Select Folder**.

The screenshot shows the BRIGADE MDR-Dashboard 5.0 interface. The top navigation bar includes a 'Playback' button and a user profile 'admin' with the time '16:37:41' and date '11-28-2017'. The main content area has four tabs: 'MDR Server', 'HDD/SD (Count: 0)', 'Online MDR (Online: 0/0)', and 'Local Files (Online MDR: 6)'. The 'Local Files' tab is selected. On the left, there is a 'Device Directory' tree with folders like 'C:\USERS\TRICIA\DESKTOP\LA...', 'C:\USERS\TRICIA\DESKTOP\ITE...', and 'D:\TEMP\'. A red arrow points from the text 'Double click on the calendar the day you want to playback' to a date '1' in the calendar. The calendar shows three months: '2017 - 04', '2017 - 03', and '2017 - 02'. The '2017 - 04' calendar has a date '1' highlighted with a red square. The '2017 - 03' and '2017 - 02' calendars are also visible. At the bottom, there is a 'Download Metadata' checkbox which is checked.



Driving Global Safety

Export footage using USB pen



Important information

1. A **bus-powered** USB hub (minimum of 2 USB ports for USB mouse and USB flash drive) will need to be purchased:

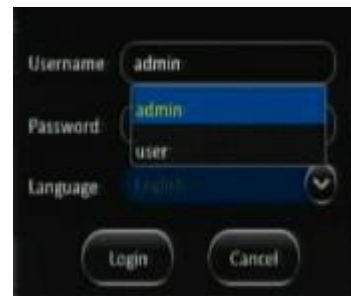
- To export/import configuration data
- For firmware upgrades
- Video exports

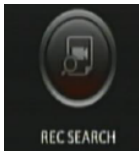


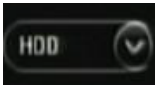
2. **Warning:** Do not connect an external HDD to the front USB port. Only USB Flash drives (which contain flash memory) is supported by this port. Brigade will not be held responsible for incorrect use of this port.

Export recordings using USB pen

1. Insert a bus-powered USB hub into the MDR front USB port.
2. Then insert a USB pen and your mouse into this USB hub.
3. Login as administrator mode. Default password is **admin**.



4. Click on  to view calendar.

5. Choose Date and the Source  (HDD/Sub-stm (sub-stream) /Main Strm (Main Stream)) of the recorded footage to view.



6. Click "Next" button.
7. Choose Video Type: All / Normal / Alarm
8. Select a single channel or ALL channels.
9. Click "Search" button. The Video results will show.
10. Click "Export" button.

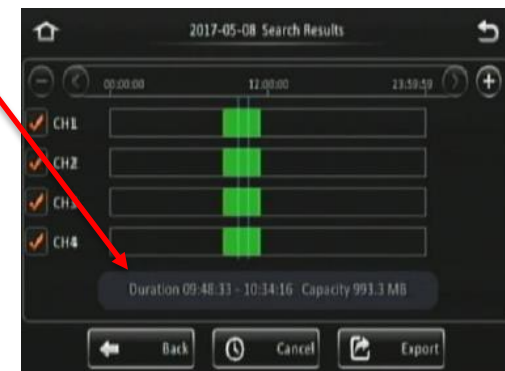


Export recordings using USB pen

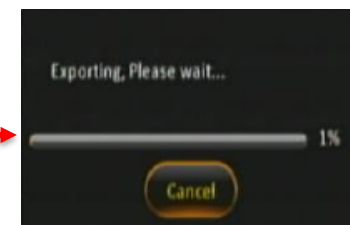
11. Enter the start time of your export, then click “Start time”.
12. Enter the end time of your export and click “End time”.



13. Duration time and capacity of file will be advised. Click “Export”
14. An export detail window show. Proprietary mode is recommended. Click OK.



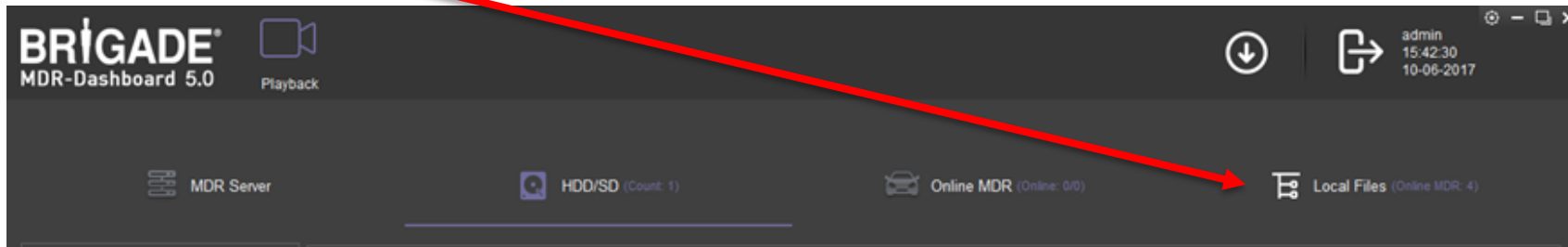
15. An export progress bar will show.
16. Export will advise successful or error i.e. lack of memory space.

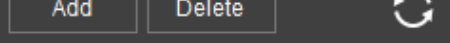


Loading from a USB drive or Folder

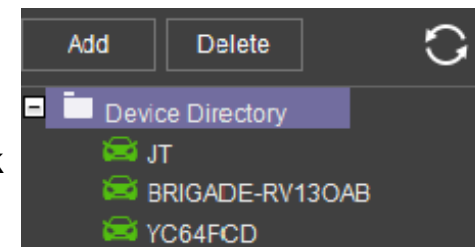
To view previously downloaded recordings from MDR and saved on a USB flash drive, or recordings manually saved in a local folder on your PC.

1. Click on **Local Files** tab to show exported files.



2. Click the **ADD** button . A Windows™ Explorer dialog box will open to allow user to select the folder with the recordings.
3. Locate relevant folder and click **SELECT FOLDER**.
4. Once the folder has been successfully loaded, it will appear in Device Directory.

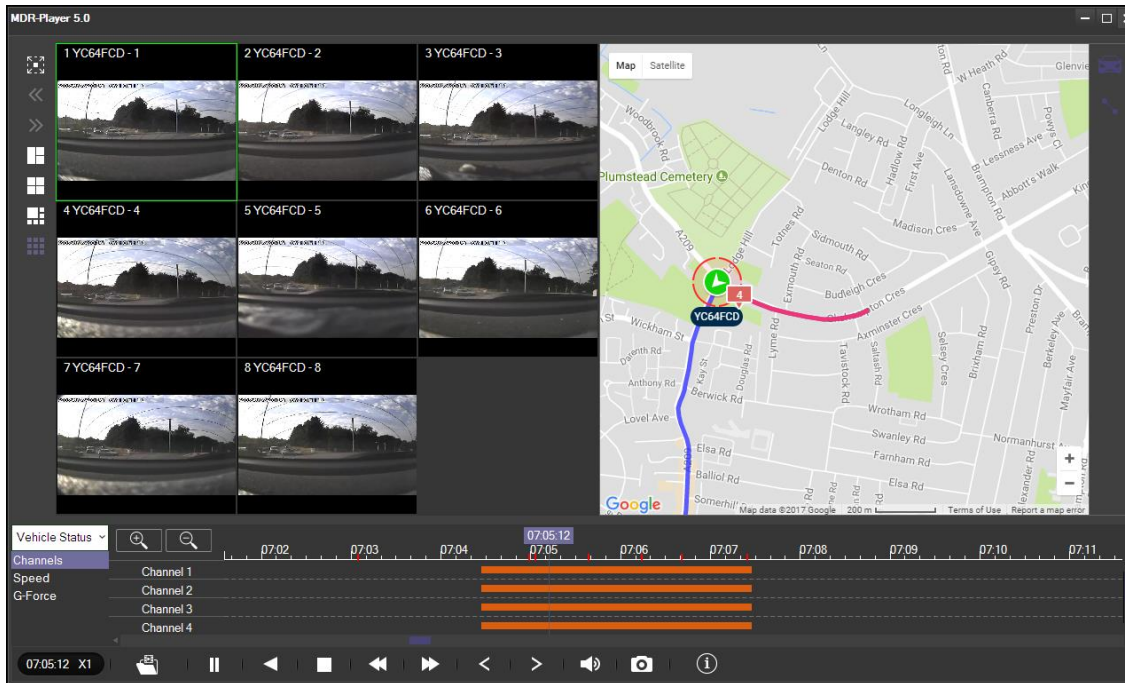
5. Double-click the vehicle icon and it will display **ALL** calendar events.
6. Double-click the relevant calendar date this will display the pre-playback screen. See pages 9 -11 of this presentation to view your file.



MDR-Player 5.0



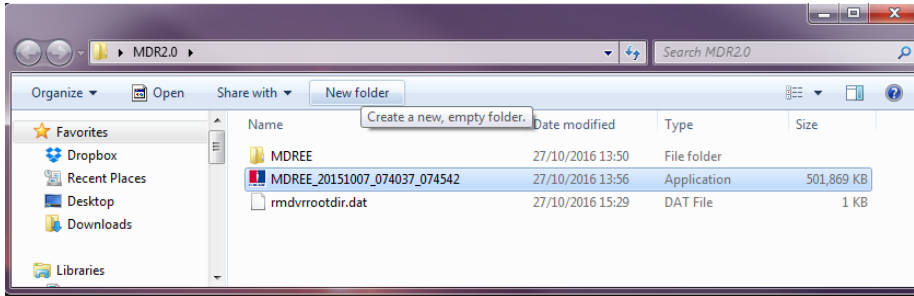
- MDR-Player 5.0 is a basic version of MDR-Dashboard 5.0
- Automatically get MDR-Player when you install MDR-Dashboard 5.0. Exported files (see Slide 13) are embedded files that contain video, metadata and MDR-Player.
- MDR-Player is used to playback executable video files (.exe) that can be password protected.
- The files are usually given to a 3rd party i.e. insurance company to view and do not require MDR-Dashboard to be installed on to the 3rd party PC.





Note: In order to use the map feature, an internet connection is required.

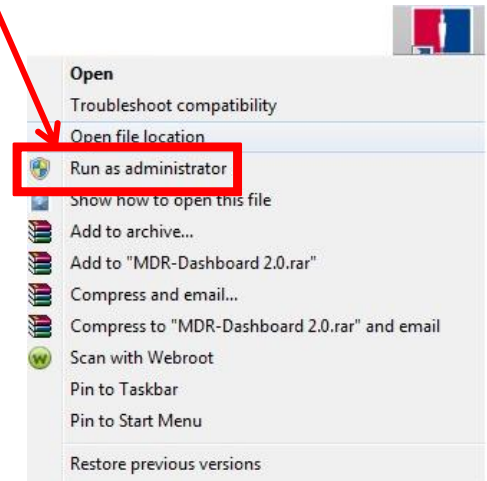
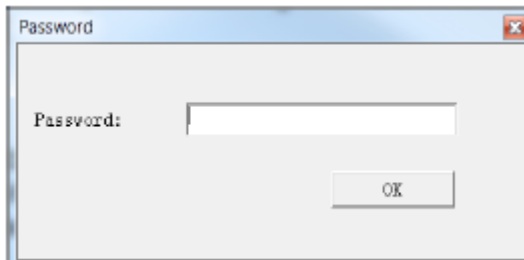
Open MDR-Player files

- Locate the directory/file on your PC.



- Right-click on the icon  and select  **Run as administrator** in menu.

- Enter your password (if you received one) and click **OK**.



Summary

The purpose of this document is to show:

- How you connect device.
- View your recordings.
- The ways to export data in various formats.

It does not cover all aspects of the MDR or it's software options.

For more detailed information please refer to the MDR Installation and Operations Guide <https://brigade-electronics.com>

Contact Us



Brigade Electronics Group Plc.

Brigade House, The Mills, Station Road

South Darenth, Kent DA4 9BD, United Kingdom

Sales: +44 (0) 1322 420300

Fax: +44 (0) 1322 420343

www.brigade-electronics.com