

### STOP / TAIL / INDICATOR INSTALLATION INSTRUCTIONS

**! IMPORTANT ! - Read all instructions before installing the STI lamps.**

#### COMPATIBLE PART CODES

308.R24CR65 / 308.R30CR65 / 308.R42CR65 /  
308.R48CR65 / 308.R60CR65

#### 542.RSTKIT INCLUDES

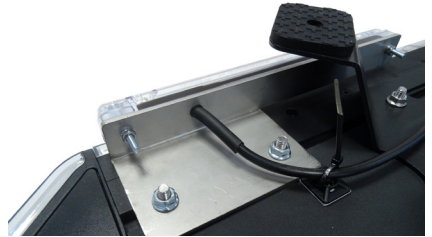
2x STI Lamps, 2x Brackets  
4x Nuts, 4x Bolts  
10x Cable Mounts  
10x Cable Ties (2.5mm x 100mm)  
1x 5m Cable

**! CAUTION ! - Disconnect the battery before installing to prevent accidental shorting and/or electrical shock.**

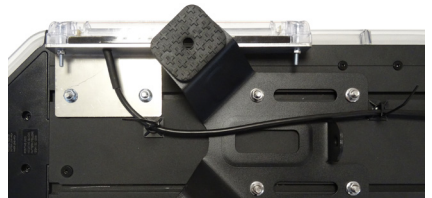


#### STEP BY STEP INSTALLATION

1. Attach the lightbar feet in the desired position before attempting to install the STI lamps.
2. Install the STI lamps on the rear side of the lightbar.
3. Attach the left hand STI lamp and bracket to the left side of the lightbar (see picture 1).
4. Attach the right hand STI lamp and bracket to the right side of the lightbar (see picture 1).
5. Use the cable mounts and cable ties to secure the cable under the lightbar (see picture 2).
6. Once you have run the 5m cable, click the male and female superseal together.



Picture 1



Picture 2

#### WIRING GUIDE

	<b>RED = Stop</b>		<b>YELLOW = LH Indicator</b>
	<b>BROWN = Tail</b>		<b>GREEN = RH Indicator</b>
	<b>WHITE = Earth</b>		

#### MODULE LENS CLEANING

Occasional cleaning is recommended to ensure optimal light output. Although tough, polycarbonate scratches easily, so take care when cleaning. Clean lens with soap and water or a lens polish using a soft cloth.

**! WARNING ! - Do NOT use solvents as they may damage the lens. Do NOT use high-pressure washers or automatic car washers. This lamp is rated IP66/68.**