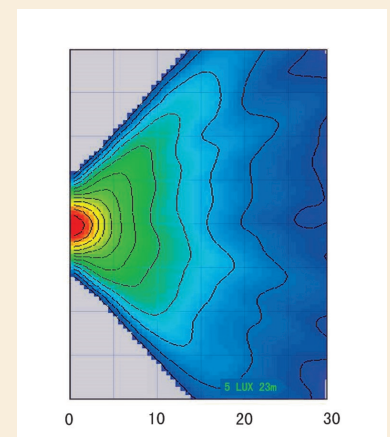




**Part of our range of durable and reliable own-brand LED worklamps, this model is supplied with a stainless steel pan/tilt mounting bracket**

- ◆ 10-30v operation
- ◆ Resistant to knocks, bumps and vibration
- ◆ Fitted with nine 3W high-performance LED emitters, generating 1800 raw lumens (1300 effective) lumens
- ◆ UV-stabilised plastic lens with cast aluminium body including built-in heat-sink for durability
- ◆ Reliable in extreme temperatures (tested between -30°C and +40°C)
- ◆ Magnetic based option also available on request
- ◆ 1 year warranty
- ◆ CE marked

<b>Part number</b>	<b>711.003</b>
Operating voltage	10-30 VDC
Current draw	2.5 A @ 12VDC
Mounting	Adjustable bolt-on mounting including pan/tilt functionality
Type approval(s)	CE
Weight	0.55kg approx.
Dimensions	122mm (W) x 39mm (D) x 122mm (H) (excluding brackets)



[www.dun-bri.com](http://www.dun-bri.com)

Dun-Bri Group  
 Watermill Industrial Estate  
 Aspenden Road  
 Buntingford SG9 9JS

01763 274185  
[sales@dun-bri.com](mailto:sales@dun-bri.com)

Dun-Bri Lancashire  
 58 Roman Way Ind. Est.  
 Longbridge Road  
 Preston PR2 5BE

01772 651647  
[lancashire@dun-bri.com](mailto:lancashire@dun-bri.com)

Dun-Bri Yorkshire  
 4 Eagle Point  
 Wakefield 41 Ind. Est.  
 Wakefield WF2 0XW

01924 577026  
[yorkshire@dun-bri.com](mailto:yorkshire@dun-bri.com)

